



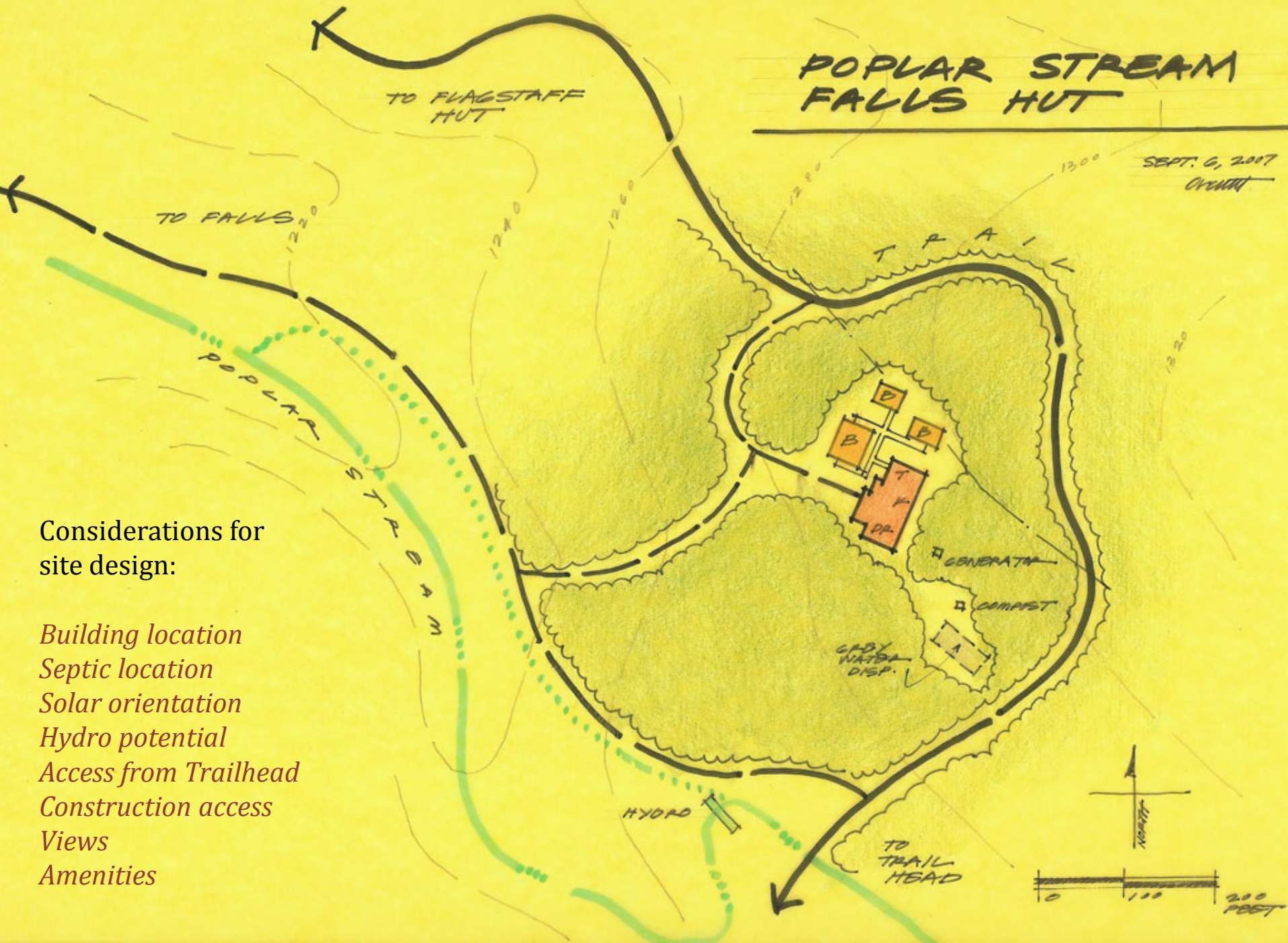
Maine Huts & Trails

Poplar Stream Hut Design

Context: Route 27 Corridor

POPLAR STREAM FALLS HUT

SEPT. 6, 2007
ORVNT



Considerations for
site design:

Building location

Septic location

Solar orientation

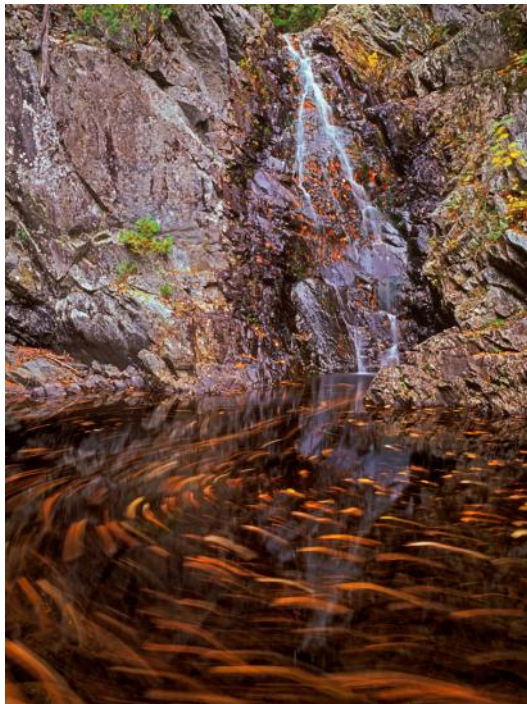
Hydro potential

Access from Trailhead

Construction access

Views

Amenities



Amenities:

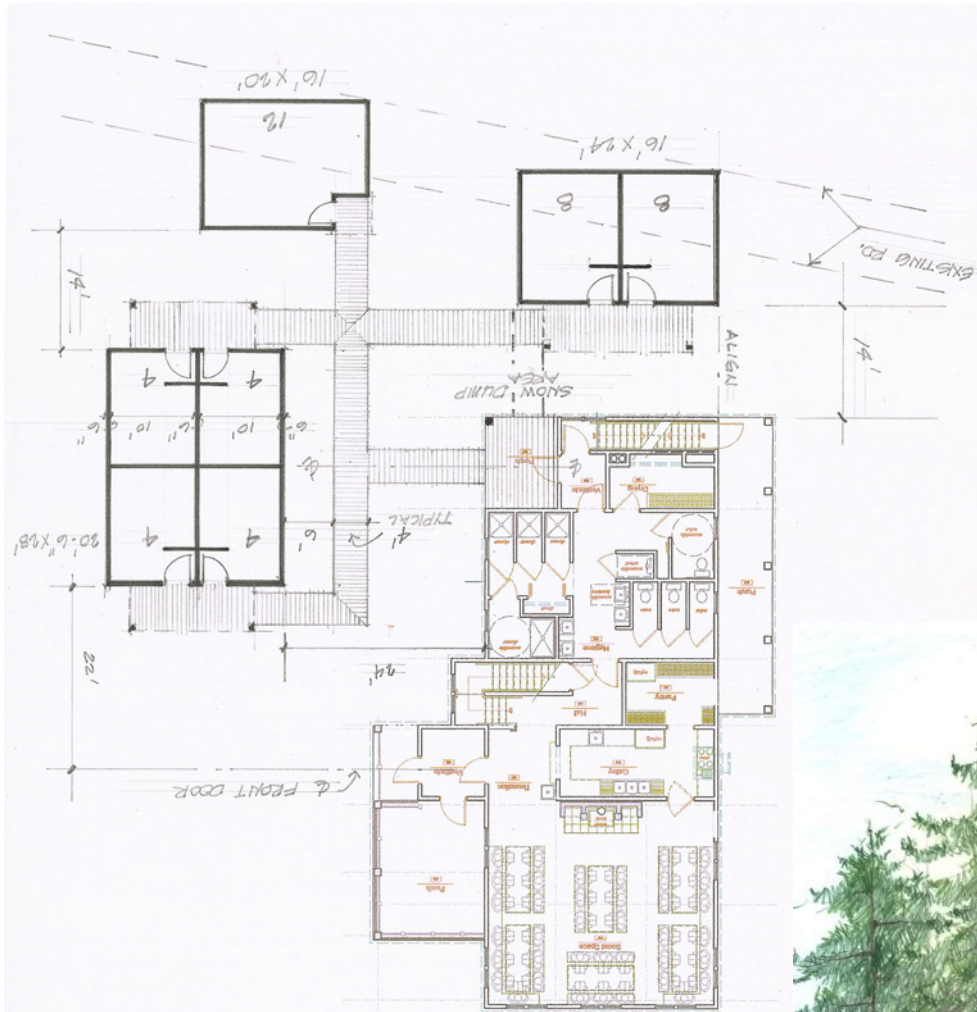
Poplar Stream

Upper Falls

Lower Falls

Forest

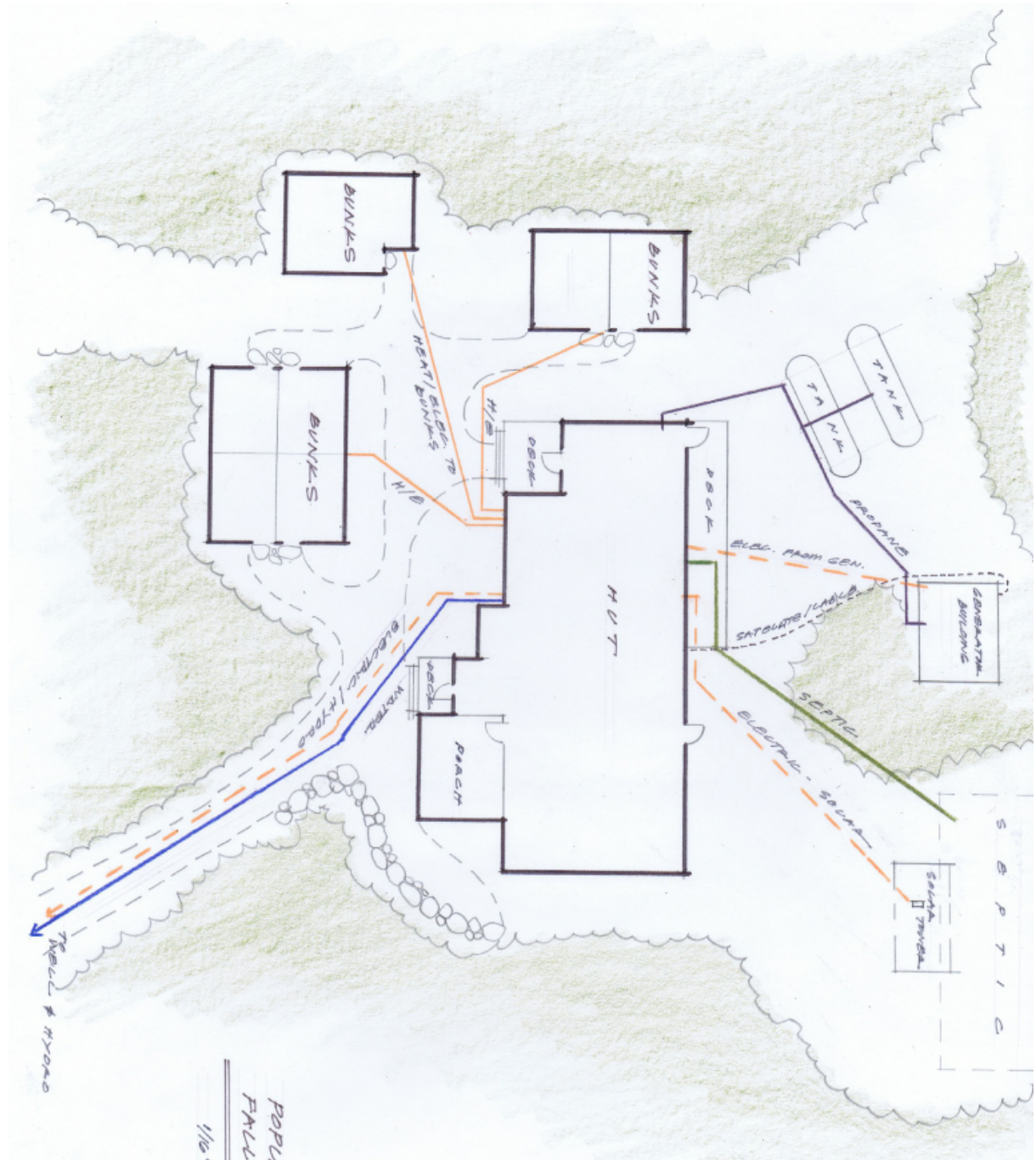
Building Design





Hut Interior

Electrical





Toilet and Septic System:

Composting Toilets

Shower Stalls

Gray Water Septic System





Heating and
Domestic
Hot Water:

Wood Fired Boiler

High capacity water

Storage tank

Radiant Floor
Distribution



Propane-fired
back-up Boiler

Wood Stove in Main
Room



Electrical:

Solar Photo Voltaic panels
2.7kWh solar array

Battery storage – 24 volt
system





Electrical:

Hydro-electric plant in small stream – 5 kWh

Battery storage – 24 volt system

Propane-fired back-up generator

